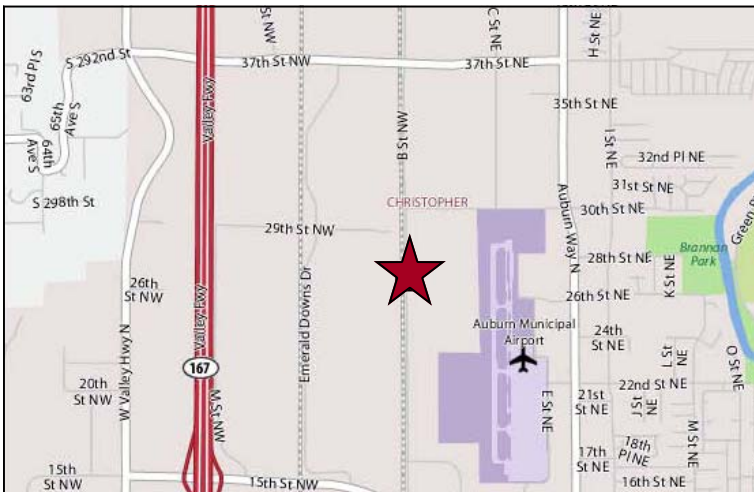




# For Lease

## Valley Centre Corporate Park

2302 B Street NW, Building 4, Auburn



### Building Features

- 37,202 SF Available
- BTS Office
- Corner Unit with Lots of Glass
- 12 DH Doors 9'x10'
- 1 GL Door
- 3 Dock Levelers
- 30' Clear Height
- Column Spacing - 43'9"x60'
- \$0.33 PSF, NNN Warehouse
- \$0.85 PSF, NNN Office
- NNN = \$0.09 PSF
- Available Now!



Commercial Real Estate Services, Worldwide.

11235 SE 6th Street, Suite 130  
 Bellevue WA 98004  
 425 586 5600 phone  
 425 455 9138 fax  
[www.nai-psp.com](http://www.nai-psp.com)

The information contained herein has been given to us by the owner of the property or other sources we deem reliable, we have no reason to doubt its accuracy, but we do not guarantee it. All information should be verified prior to purchase or lease.  
 Valley Centre Corporate Park Bldg 4 JF 0723

For More Information Visit:  
[www.nai-psp.com/properties/featured](http://www.nai-psp.com/properties/featured)

Contact:  
**Jeff Forsberg, CCIM**  
 direct 425 586 5610  
[jforsberg@nai-psp.com](mailto:jforsberg@nai-psp.com)

**Arie Salomon, SIOR, CCIM**  
 direct 425 586 5636  
[asalomon@nai-psp.com](mailto:asalomon@nai-psp.com)

# For Lease Valley Centre Corporate Park

2302 B Street NW, Building 4, Auburn

