



**AMB PROPERTY CORPORATION**  
Local partner to global trade.™

# FOR LEASE



**2,105 - 4,788 SF  
Available**

**Seattle Logistics 1 & 2  
SeaTac, WA**

**18800 - 8th Avenue South  
Building D, Suite 2500  
SeaTac, WA**

Building D

Suite 2100                    1,117 SF (All Office)  
Suite 2500                    4,228 SF (All Office)

**18900 - 8th Avenue South  
Building E, Suite 400-500  
SeaTac, WA**

Building E

Suite 400-500                4,788 SF (All Office)

Rate                            **\$0.50 PSF, NNN**  
(for the first year on min.  
3-year deal)

Location                      Minutes from Primary Airport  
Cargo Area at Sea-Tac Intl.  
Airport

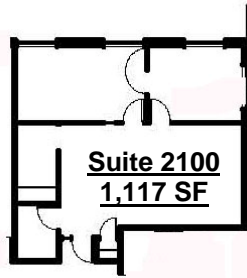
Building Features           Premier Airfreight Facility in  
Seattle. Spacious Locations  
Overlooking Mt. Rainier &  
Airport Runways.



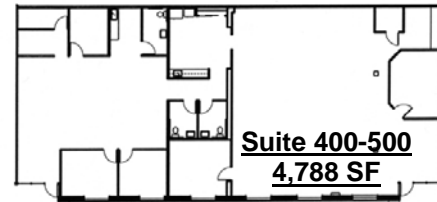
**AMB PROPERTY CORPORATION**  
Local partner to global trade.™

# FOR LEASE

## Building D



## Building E



For additional information, please contact:

Arie Salomon, SIOR, CCIM  
NAI Puget Sound Properties  
Principal  
Direct 425 586 5636  
Fax 425 455 9138  
Email [asalomon@nai-pp.com](mailto:asalomon@nai-pp.com)

Jeff Forsberg, CCIM  
NAI Puget Sound Properties  
Principal  
Direct 425 586 5610  
Fax 425 455 9138  
Email [jforsberg@nai-pp.com](mailto:jforsberg@nai-pp.com)

Billy Moultrie  
NAI Puget Sound Properties  
Principal  
Direct 425 586 5612  
Fax 425 455 9138  
Email [bmoultrie@nai-pp.com](mailto:bmoultrie@nai-pp.com)



Commercial Real Estate Services, Worldwide.

NO WARRANTIES OR REPRESENTATIONS, EXPRESSED OR IMPLIED, ARE MADE AS TO THE ACCURACY OR COMPLETENESS OF THE INFORMATION CONTAINED HEREIN AND SAME IS SUBMITTED SUBJECT TO ERRORS, OMISSIONS, RENTAL OR OTHER CONDITIONS, WITHDRAWAL WITHOUT NOTICE, AND TO ANY SPECIAL LISTING CONDITIONS IMPOSED BY OUR PRINCIPALS. ALL SIZES ARE APPROXIMATE. AMB MAKES NO COMMITMENT TO UPDATE THE INFORMATION CONTAINED HEREIN, AND MAY MAKE CHANGES TO THESE MATERIALS AT ANY TIME WITHOUT NOTICE. IN NO EVENT SHALL AMB OR ITS AFFILIATES BE LIABLE FOR ANY DAMAGES WHATSOEVER (INCLUDING, WITHOUT LIMITATION, DAMAGES FOR LOSS OF PROFITS, BUSINESS INTERRUPTION, OR LOSS OF OPPORTUNITY) ARISING OUT OF THE USE OF THE INFORMATION CONTAINED HEREIN.