

Seattle Logistics 2

Building D

12,400 Square Feet Office Space For Lease

18800 - 8th Avenue South, SeaTac



PROLOGIS



suite 2400

size

- 12,400 square feet (all office)

features

- located within 5 minutes of cargo entrance to SeaTac International Airport
- spacious locations overlooking Mt. Rainier & airport runways



Commercial Real Estate Services, Worldwide.

NAI Puget Sound Properties

ph 425.586.5600

fax 425.455.9138

11235 SE 6th Street, Suite 130

Bellevue, WA 98004

www.nai-psp.com

Prologis

ph 206.414.7600

fax 206.424.7601

12720 Gateway Drive, Suite 110

Tukwila, WA 98168

www.prologis.com

Seattle Logistics 2

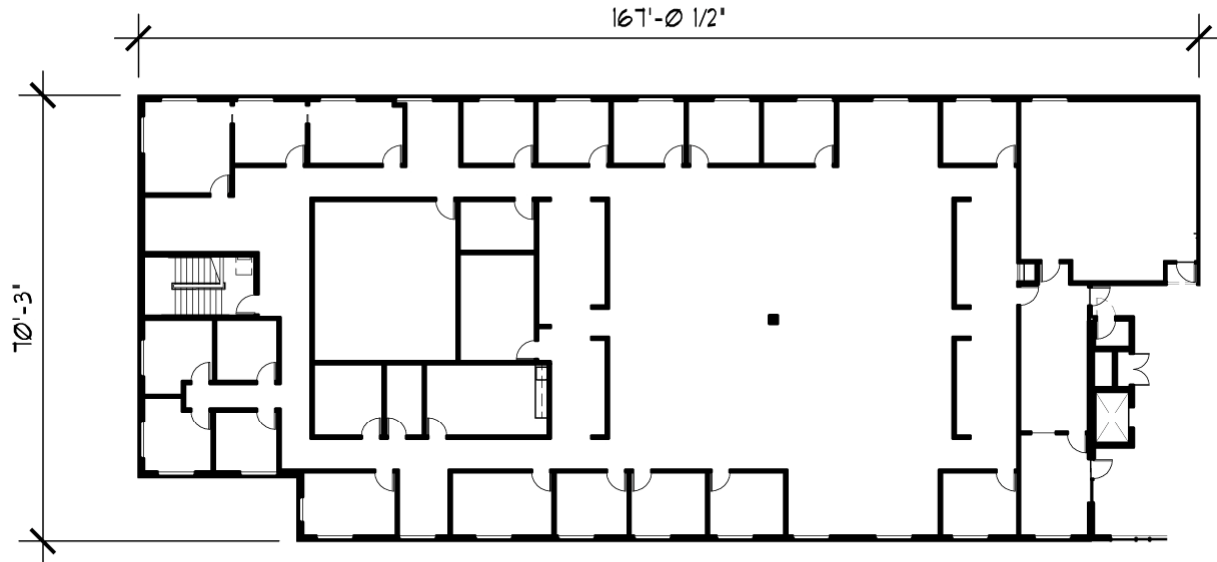
Building D

12,400 Square Feet Office Space For Lease

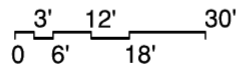
18800 - 8th Avenue South, SeaTac



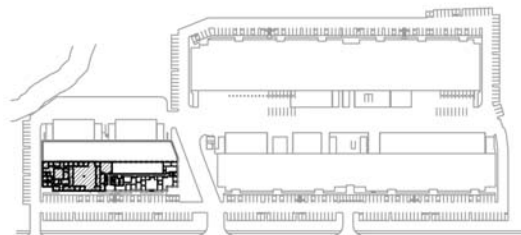
PROLOGIS



AVAILABLE OFFICE



TOTAL AREA : 12,400 SF



KEY PLAN
NOT TO SCALE

NAI Puget Sound Properties
Arie Salomon, SIOR, CCIM
asalomon@nai-psp.com
ph 425.586.5636
fax 425.455.9138
cell 425.246.9280
11235 SE 6th Street, Suite 130
Bellevue, WA 98004

NAI Puget Sound Properties
Jeff Forsberg, CCIM
jforsberg@nai-psp.com
ph 425.586.5610
fax 425.455.9138
cell 206.310.3841
11235 SE 6th Street, Suite 130
Bellevue, WA 98001

NAI Puget Sound Properties
Billy Moultrie
bmoultrie@nai-psp.com
ph 253.203.1322
fax 253.203.1333
cell 206.228.1847
1015 'A' Street, Suite 101
Tacoma, WA 98402

Prologis
ph 206.414.7600
fax 206.424.7601
12720 Gateway Drive, Suite 110
Tukwila, WA 98168
www.prologis.com