



AMB PROPERTY CORPORATION
Local partner to global trade.™

FOR LEASE



11,696 SF Available | Seattle Logistics 2 - Building D SeaTac, WA

**18800 - 8th Avenue South
Building D, Suite 1100
SeaTac, WA**

<u>Building D</u> Suite 1100	11,696 SF (1,170 SF of Office)
Clear Height	18'
Loading	7 DH & 1 GL
Location	Located Within 5 Minutes of Cargo Entrance to Sea-Tac Intl. Airport
Features	Spacious Locations Overlooking Mt. Rainier & Airport Runways.. Concrete Apron, Dock Canopy, Dock Levelers and Excellent Truck Maneuvering.

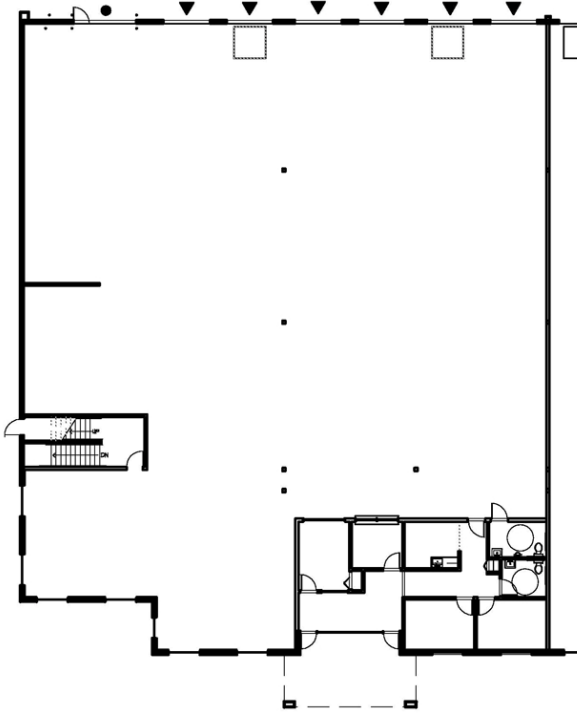


Location Map

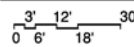


AMB PROPERTY CORPORATION
Local partner to global trade.™

FOR LEASE



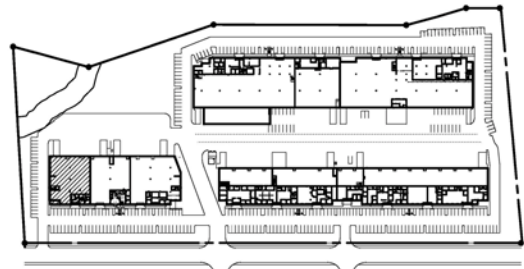
AVAILABLE SPACE



WAREHOUSE : 10,526 SF
OFFICE : 1,170 SF
TOTAL AREA : 11,696 SF

LEGEND

- ON GRADE DOOR
- ▲ DOCK LEVEL DOOR



KEY PLAN
NOT TO SCALE

For additional information, please contact:

Arie Salomon, SIOR, CCIM
NAI Puget Sound Properties
Principal
Direct 425 586 5636
Fax 425 455 9138
Email asalomon@nai-pp.com

Jeff Forsberg, CCIM
NAI Puget Sound Properties
Principal
Direct 425 586 5610
Fax 425 455 9138
Email jforsberg@nai-pp.com

Billy Moultrie
NAI Puget Sound Properties
Principal
Direct 425 586 5612
Fax 425 455 9138
Email bmoultrie@nai-pp.com



Commercial Real Estate Services, Worldwide.

NO WARRANTIES OR REPRESENTATIONS, EXPRESSED OR IMPLIED, ARE MADE AS TO THE ACCURACY OR COMPLETENESS OF THE INFORMATION CONTAINED HEREIN AND SAME IS SUBMITTED SUBJECT TO ERRORS, OMISSIONS, RENTAL OR OTHER CONDITIONS, WITHDRAWAL WITHOUT NOTICE, AND TO ANY SPECIAL LISTING CONDITIONS IMPOSED BY OUR PRINCIPALS. ALL SIZES ARE APPROXIMATE. AMB MAKES NO COMMITMENT TO UPDATE THE INFORMATION CONTAINED HEREIN, AND MAY MAKE CHANGES TO THESE MATERIALS AT ANY TIME WITHOUT NOTICE. IN NO EVENT SHALL AMB OR ITS AFFILIATES BE LIABLE FOR ANY DAMAGES WHATSOEVER (INCLUDING, WITHOUT LIMITATION, DAMAGES FOR LOSS OF PROFITS, BUSINESS INTERRUPTION, OR LOSS OF OPPORTUNITY) ARISING OUT OF THE USE OF THE INFORMATION CONTAINED HEREIN.