



**AMB PROPERTY CORPORATION**  
Local partner to global trade.™

# FOR LEASE



## 14,464 SF Available | Seattle Logistics 2 - Building D SeaTac, WA

**18800 - 8th Avenue South  
Building D, Suite 100  
SeaTac, WA**

<u>Building D</u>	
Suite 100	14,464 SF (1,736 SF of Office)
Clear Height	18'
Loading	6 DH & 1 GL
Location	Located Within 5 Minutes of Cargo Entrance to Sea-Tac Intl. Airport
Features	Spacious Locations Overlooking Mt. Rainier & Airport Runways.. Concrete Apron, Dock Canopy, Dock Levelers and Excellent Truck Maneuvering.



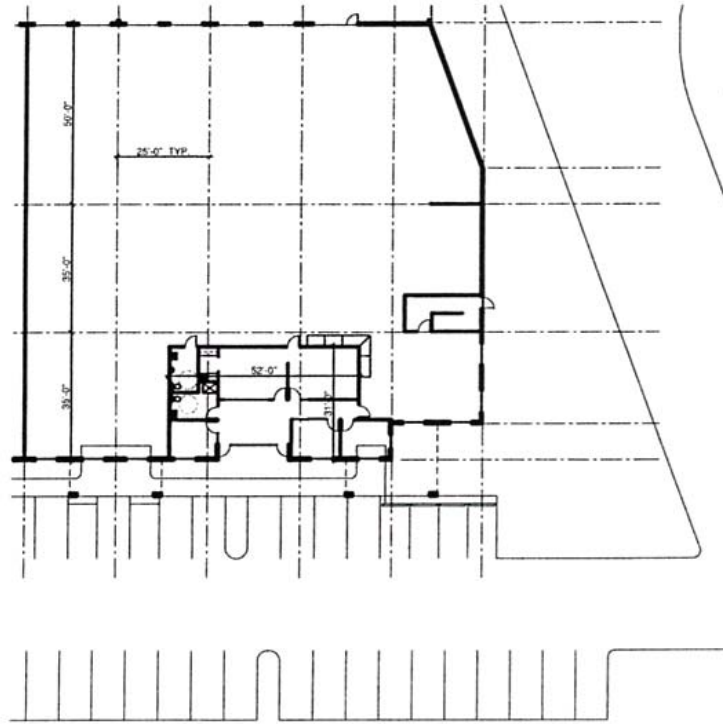
Location Map



**AMB PROPERTY CORPORATION**  
Local partner to global trade.™

# FOR LEASE

**Building D  
Suite 100**



For additional information, please contact:

Arie Salomon, SIOR, CCIM  
NAI Puget Sound Properties  
Principal  
Direct 425 586 5636  
Fax 425 455 9138  
Email [asalomon@nai-pp.com](mailto:asalomon@nai-pp.com)

Jeff Forsberg, CCIM  
NAI Puget Sound Properties  
Principal  
Direct 425 586 5610  
Fax 425 455 9138  
Email [jforsberg@nai-pp.com](mailto:jforsberg@nai-pp.com)

Billy Moultrie  
NAI Puget Sound Properties  
Principal  
Direct 425 586 5612  
Fax 425 455 9138  
Email [bmoultrie@nai-pp.com](mailto:bmoultrie@nai-pp.com)



Commercial Real Estate Services, Worldwide.

NO WARRANTIES OR REPRESENTATIONS, EXPRESSED OR IMPLIED, ARE MADE AS TO THE ACCURACY OR COMPLETENESS OF THE INFORMATION CONTAINED HEREIN AND SAME IS SUBMITTED SUBJECT TO ERRORS, OMISSIONS, RENTAL OR OTHER CONDITIONS, WITHDRAWAL WITHOUT NOTICE, AND TO ANY SPECIAL LISTING CONDITIONS IMPOSED BY OUR PRINCIPALS. ALL SIZES ARE APPROXIMATE. AMB MAKES NO COMMITMENT TO UPDATE THE INFORMATION CONTAINED HEREIN, AND MAY MAKE CHANGES TO THESE MATERIALS AT ANY TIME WITHOUT NOTICE. IN NO EVENT SHALL AMB OR ITS AFFILIATES BE LIABLE FOR ANY DAMAGES WHATSOEVER (INCLUDING, WITHOUT LIMITATION, DAMAGES FOR LOSS OF PROFITS, BUSINESS INTERRUPTION, OR LOSS OF OPPORTUNITY) ARISING OUT OF THE USE OF THE INFORMATION CONTAINED HEREIN.