



**AMB PROPERTY CORPORATION**  
Local partner to global trade.™

# FOR LEASE



## 18,601 SF Available | Seattle Logistics 1 - Building C SeaTac, WA

**835 South 192nd Street  
Building C, Suite 500  
SeaTac, WA**

Building C

Suite 500 18,601 SF (5,208 SF of Office)  
(Which Includes 2,689 SF of Mezzanine Office)

Loading 6 DH & 1 GL

Clear Height 24'

Location Located Within 5 Minutes of Cargo Entrance to Sea-Tac Intl. Airport

Features Three Dock Levelers, Concrete Apron, Dock Canopy and Excellent Truck Maneuvering

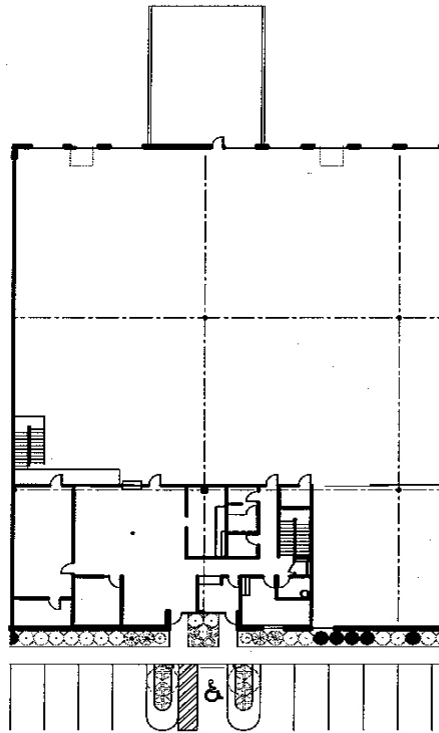


**Premier Airfreight Facility in Seattle**



**AMB PROPERTY CORPORATION**  
Local partner to global trade.™

# FOR LEASE



## AVAILABLE FOR LEASE

1' 5' 8' 15' 20'  
SUITE 500

TOTAL AREA = 18,601 sf  
OFFICE AREA = 2,519 sf  
MEZZANINE = 2,689 sf  
WRHSE AREA = 13,393 sf

For additional information, please contact:

Arie Salomon, SIOR, CCIM  
NAI Puget Sound Properties  
Principal  
Direct 425 586 5636  
Fax 425 455 9138  
Email [asalomon@nai-pp.com](mailto:asalomon@nai-pp.com)

Jeff Forsberg, CCIM  
NAI Puget Sound Properties  
Principal  
Direct 425 586 5610  
Fax 425 455 9138  
Email [jforsberg@nai-pp.com](mailto:jforsberg@nai-pp.com)

Billy Moultrie  
NAI Puget Sound Properties  
Principal  
Direct 425 586 5612  
Fax 425 455 9138  
Email [bmoultrie@nai-pp.com](mailto:bmoultrie@nai-pp.com)



Commercial Real Estate Services, Worldwide.

NO WARRANTIES OR REPRESENTATIONS, EXPRESSED OR IMPLIED, ARE MADE AS TO THE ACCURACY OR COMPLETENESS OF THE INFORMATION CONTAINED HEREIN AND SAME IS SUBMITTED SUBJECT TO ERRORS, OMISSIONS, RENTAL OR OTHER CONDITIONS, WITHDRAWAL WITHOUT NOTICE, AND TO ANY SPECIAL LISTING CONDITIONS IMPOSED BY OUR PRINCIPALS. ALL SIZES ARE APPROXIMATE. AMB MAKES NO COMMITMENT TO UPDATE THE INFORMATION CONTAINED HEREIN, AND MAY MAKE CHANGES TO THESE MATERIALS AT ANY TIME WITHOUT NOTICE. IN NO EVENT SHALL AMB OR ITS AFFILIATES BE LIABLE FOR ANY DAMAGES WHATSOEVER (INCLUDING, WITHOUT LIMITATION, DAMAGES FOR LOSS OF PROFITS, BUSINESS INTERRUPTION, OR LOSS OF OPPORTUNITY) ARISING OUT OF THE USE OF THE INFORMATION CONTAINED HEREIN.