

# Seattle Logistics 1

## Building C

10,797 Square Feet Industrial Space For Lease

835 South 192nd Street, SeaTac



**PROLOGIS**



### suite 1400

#### size

- 10,797 square feet (4,968 square feet of office)

#### features

- 5 dock high loading doors
- 1 grade level door
- 24' clear height
- located within 5 minutes of cargo entrance to SeaTac International Airport
- spacious locations overlooking Mt. Rainier & airport runways
- concrete apron, dock levelers, dock canopy
- excellent truck maneuvering



Commercial Real Estate Services, Worldwide.

#### NAI Puget Sound Properties

ph 425.586.5600

fax 425.455.9138

11235 SE 6th Street, Suite 130

Bellevue, WA 98004

www.nai-ppsp.com

#### Prologis

ph 206.414.7600

fax 206.424.7601

12720 Gateway Drive, Suite 110

Tukwila, WA 98168

www.prologis.com

# Seattle Logistics 1

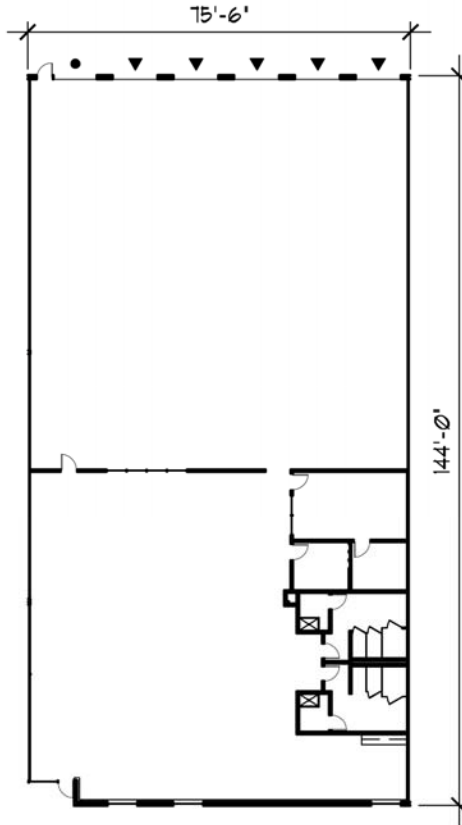
## Building C

10,797 Square Feet Industrial Space For Lease

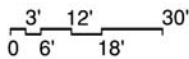
835 South 192nd Street, SeaTac



**PROLOGIS**



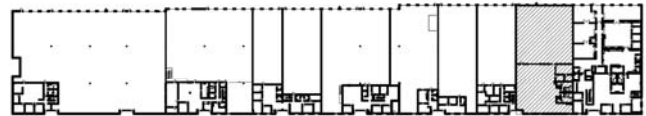
### AVAILABLE WAREHOUSE & OFFICE



OFFICE AREA : 4,968 SF  
WAREHOUSE AREA : 5,829 SF  
TOTAL AREA : 10,797 SF

#### LEGEND

- ON GRADE DOOR
- ▲ DOCK LEVEL DOOR
- RAIL DOOR



KEY PLAN  
NOT TO SCALE

**NAI Puget Sound Properties**  
Arie Salomon, SIOR, CCIM  
asalomon@nai-ppsp.com  
ph 425.586.5636  
fax 425.455.9138  
cell 425.246.9280  
11235 SE 6th Street, Suite 130  
Bellevue, WA 98004

**NAI Puget Sound Properties**  
Jeff Forsberg, CCIM  
jforsberg@nai-ppsp.com  
ph 425.586.5610  
fax 425.455.9138  
cell 206.310.3841  
11235 SE 6th Street, Suite 130  
Bellevue, WA 98001

**NAI Puget Sound Properties**  
Billy Moultrie  
bmoultrie@nai-ppsp.com  
ph 253.203.1322  
fax 253.203.1333  
cell 206.228.1847  
1015 'A' Street, Suite 101  
Tacoma, WA 98402

**Prologis**  
ph 206.414.7600  
fax 206.424.7601  
12720 Gateway Drive, Suite 110  
Tukwila, WA 98168  
www.prologis.com