



**AMB PROPERTY CORPORATION**  
Local partner to global trade.™

# FOR LEASE



## 16,971 SF Available | Seattle Logistics 1 - Building B SeaTac, WA

**855 South 192nd Street  
Building B, Suite 1000  
SeaTac, WA**

Building B

Suite 1000      16,971 SF (2,000 SF of Office)  
(Can be Combined with Suite 110 to  
make 5,428 SF of office)

Loading      10 DH & 2 GL

Clear Height      24'

Location      Located Within 5 Minutes of Cargo  
Entrance to Sea-Tac Intl. Airport

Features      Three Dock Levelers, Concrete Apron,  
Dock Canopy and Excellent Truck Ma-  
neuvering

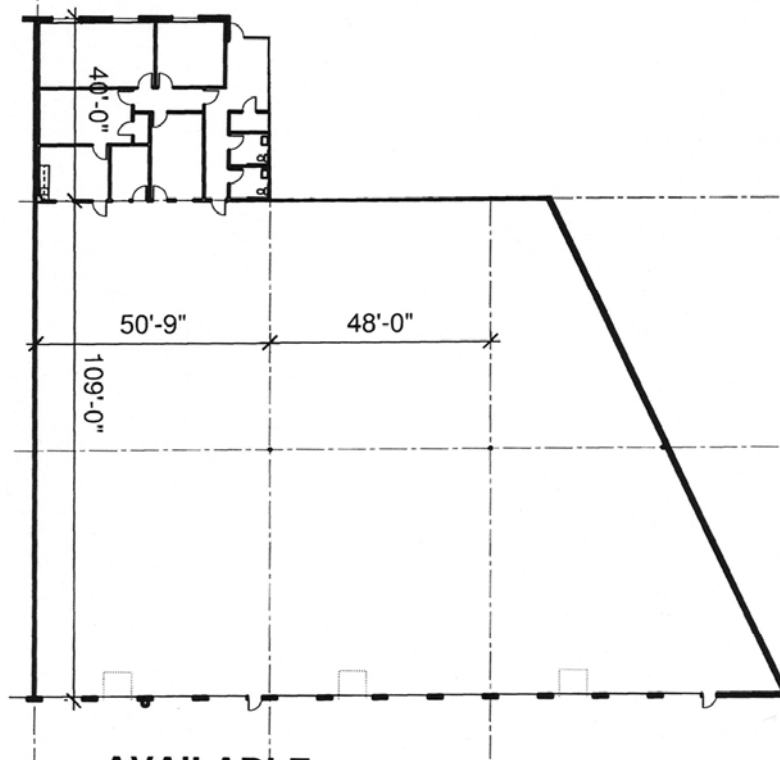


**Premier Airfreight Facility in Seattle**

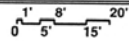


**AMB PROPERTY CORPORATION**  
Local partner to global trade.™

# FOR LEASE



**AVAILABLE**



SUITE 1000

TOTAL AREA = 16,971 sf  
OFFICE AREA = 2,000 sf  
WAREHOUSE AREA = 14,971 sf

For additional information, please contact:

Arie Salomon, SIOR, CCIM  
NAI Puget Sound Properties  
Principal  
Direct 425 586 5636  
Fax 425 455 9138  
Email [asalomon@nai-ppsp.com](mailto:asalomon@nai-ppsp.com)

Jeff Forsberg, CCIM  
NAI Puget Sound Properties  
Principal  
Direct 425 586 5610  
Fax 425 455 9138  
Email [jforsberg@nai-ppsp.com](mailto:jforsberg@nai-ppsp.com)

Billy Moultrie  
NAI Puget Sound Properties  
Principal  
Direct 425 586 5612  
Fax 425 455 9138  
Email [bmoultrie@nai-ppsp.com](mailto:bmoultrie@nai-ppsp.com)



Commercial Real Estate Services, Worldwide.

NO WARRANTIES OR REPRESENTATIONS, EXPRESSED OR IMPLIED, ARE MADE AS TO THE ACCURACY OR COMPLETENESS OF THE INFORMATION CONTAINED HEREIN AND SAME IS SUBMITTED SUBJECT TO ERRORS, OMISSIONS, RENTAL OR OTHER CONDITIONS, WITHDRAWAL WITHOUT NOTICE, AND TO ANY SPECIAL LISTING CONDITIONS IMPOSED BY OUR PRINCIPALS. ALL SIZES ARE APPROXIMATE. AMB MAKES NO COMMITMENT TO UPDATE THE INFORMATION CONTAINED HEREIN, AND MAY MAKE CHANGES TO THESE MATERIALS AT ANY TIME WITHOUT NOTICE. IN NO EVENT SHALL AMB OR ITS AFFILIATES BE LIABLE FOR ANY DAMAGES WHATSOEVER (INCLUDING, WITHOUT LIMITATION, DAMAGES FOR LOSS OF PROFITS, BUSINESS INTERRUPTION, OR LOSS OF OPPORTUNITY) ARISING OUT OF THE USE OF THE INFORMATION CONTAINED HEREIN.